

Hybrid End Truck Offers Best of Both Worlds

Enclosed Track Ergonomics With Patented Track Spanning

Gorbel further establishes itself as the leader in ergonomic material handling with the introduction of a new hybrid end truck, which gives you the benefits of both enclosed track and patented track cranes. This new design allows customers to use ergonomic, easy to use enclosed track bridges with the higher capacity structural efficiency of Cleveland Tramrail™'s Tarca™ patented track. The result? The benefits of lightweight bridges with more capacity and spanning option on the runways.

Applications:

Multiple Bridge Systems with Runway Capacity Issues

This product is perfect for applications with multiple bridges hung from one runway system. Many times, these applications would exceed the runway capacity of enclosed track.

Long Spans on the Runways

Using Patented Track on the runway allows for spans far past what enclosed track is capable of. With this new end truck, you now have the perfect ergonomic solution with easy to move enclosed track bridges and patented track runways.

Multiple Bridge Systems without Travel Limitation

With this new end truck, we can now offer runways that allow multiple bridges to operate without restricting how close the bridges get together. No more bridge buffers or travel zones for bridges.

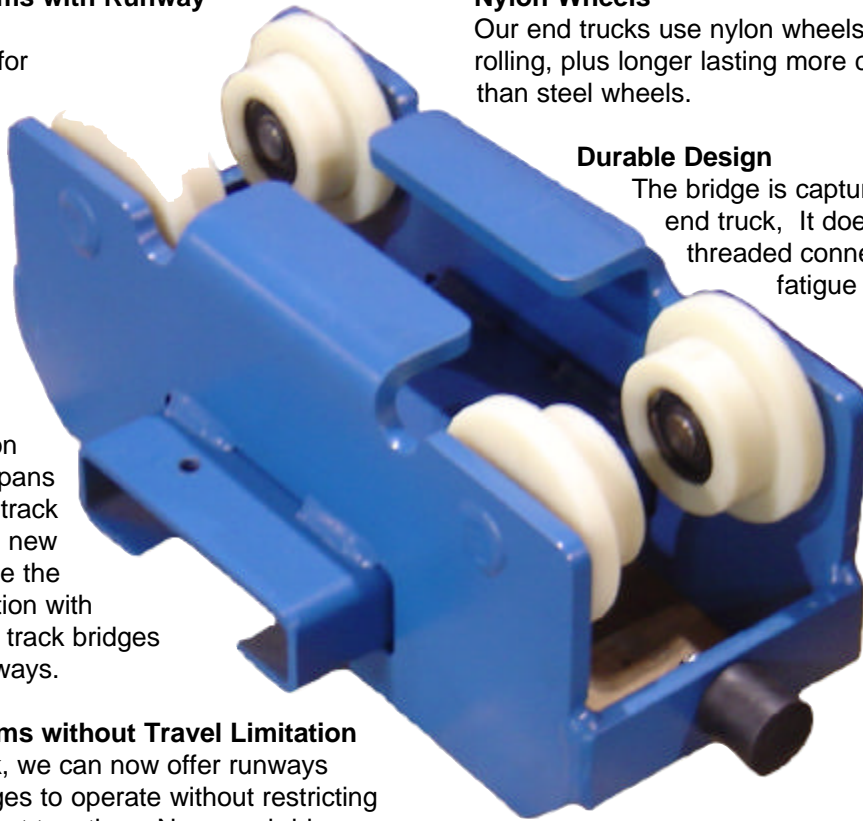
Features:

Nylon Wheels

Our end trucks use nylon wheels, which provide quiet rolling, plus longer lasting more consistent performance than steel wheels.

Durable Design

The bridge is captured in the body of the end truck, It doesn't rely on welds or threaded connections that could fatigue and fail over time.



Product Offering:

Bridge Type

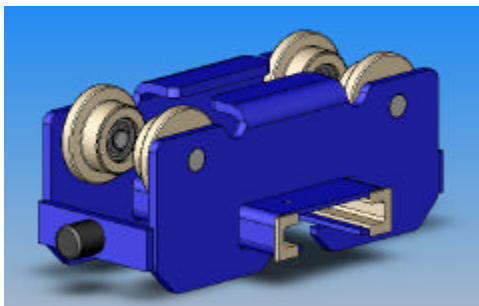
Steel and aluminum

Bridge Spans

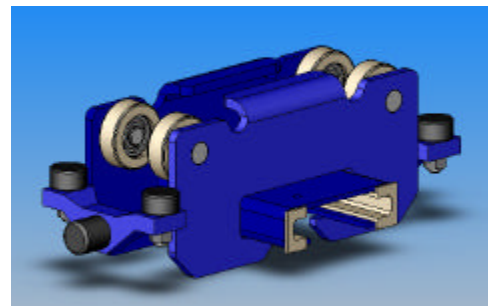
Up to 34' length

Capacities

250 to 4000# bridges



Hybrid End Truck with Flanged Wheels



Hybrid End Truck with Guide Rollers

Product Available Summer 2004